

NC State Employer Support

HANDOUT

Overview of Jenkins MBA Program

Sponsoring your employee to complete their MBA is not just an investment in them – it is an investment in your company's future. Our program takes a hands-on learning approach that immerses your employees in today's global marketplace. As the employer you will benefit almost immediately when they begin applying what they have learned in the classroom to your company. We team up with industry leaders to provide practical experience that translates into real-life success. Those who pursue our accredited STEM MBA will be able to pursue the program will be able to demonstrate expertise in subjects such as statistics, data analytics, operations and supply chain, finance, and digital marketing and modeling.

- **REAL-WORLD EXPERIENCE** – Our students work with more than 200 industry partners on projects that directly impact the marketplace and graduate with the confidence that comes from real-life knowledge.
- **INNOVATIVE CURRICULUM** – Building upon the expertise of our noted faculty and extensive partnerships with industry leaders, we deliver a rigorous and highly experiential academic program, allowing your employees to work on strategic initiatives to move your organization forward, while earning their MBA.
- **EXCELLENCE AT A GREAT VALUE** – Rated as one of the nation's top MBA programs, we combine affordability with innovation in business education to create one seriously smart career investment.

Benefits for your MBA grad (and the company):



GLOBAL VIEW OF BUSINESS



TRANSFERABLE BUSINESS KNOWLEDGE



INCREASED ANALYTICAL AND PROBLEM SOLVING ABILITIES



STRATEGIC DECISION MAKING



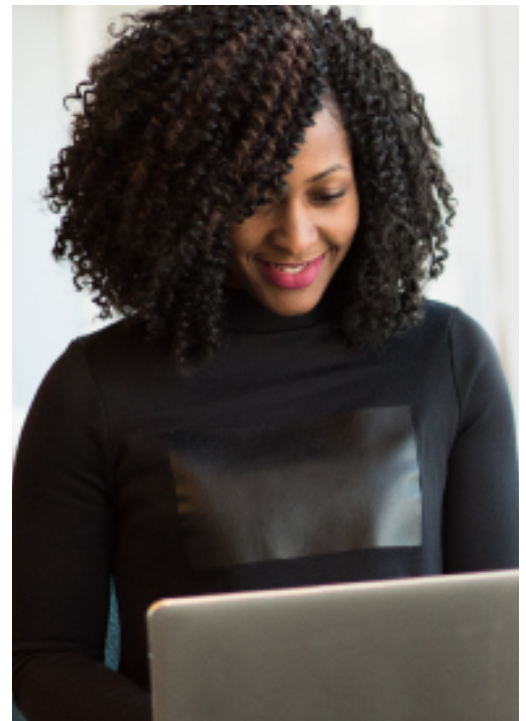
CREATIVITY AND ADAPTABILITY



ACCESS TO INVALUABLE NETWORK



LEADERSHIP DEVELOPMENT



Estimated Tuition



**PROFESSIONAL
ONLINE**

IN-STATE: \$57,298

OUT-OF-STATE: \$101,685

Amounts shown are minimum estimates for full program tuition and do not include books, materials costs, and future tuition increases.



NC State Employer Support

poole.ncsu.edu



Time and Commitment

Students can select between two tracks:



ACCELERATED:

Complete in as few as 21 months (including some weekend and/or international courses)



FLEXIBLE:

Complete at your own pace within six years

Core Curriculum

The core curriculum includes the 20 credit hours listed below. An additional 20 credit hours consist of electives, practicum, and analytical requirements where one can complete an optional certificate to meet unique interests and career needs such as financial management, supply chain, marketing, or entrepreneurship and technology for a total of 40 credit hours.

ACCOUNTING

- Financial
- Managerial

ECONOMICS

- Essential Economics for Managers

STRATEGY

- Data Driven Managerial Decisions I
- Data Driven Managerial Decisions II

FINANCE

- Financial Management of Corporations

LEADERSHIP/MANAGEMENT

- Leading People 1
- Leading People 2
- Ethical Thinking for Managers
- Critical Thinking for Managers

SUPPLY CHAIN

- Principles of Operations & Supply Chain Management

MARKETING

- Marketing Management and Strategy

Testimonials



The Jenkins MBA gave me a greater understanding of my surroundings and the value I could deliver to my existing accounts. I was able to employ a more profound leadership style and implement the use of KPIs on my accounts with confidence."

—PHILLIP CLONTZ '19



One of the things that popped out to me is the real world experience that you receive through NC State. You do not just get an education, you get to add to your skillset and learn through actual projects."

—ANJANIE KASHIDAS '18



I miss the constant "ah-ha" lightbulb moments that came on every day which I could apply to my job. The value of the program was recognized from the starting day, each week provided continuous improvement."

—STEVEN LACLAIR '17

